

## ELECTRICAL SYSTEM DESIGN

Do you need to provide electric power to a new plant or installation? Are you installing new equipment, or are you upgrading an existing installation?

At Welcon, we apply a strategic and holistic approach to electrical systems design that produces reliable and cost effective solutions.

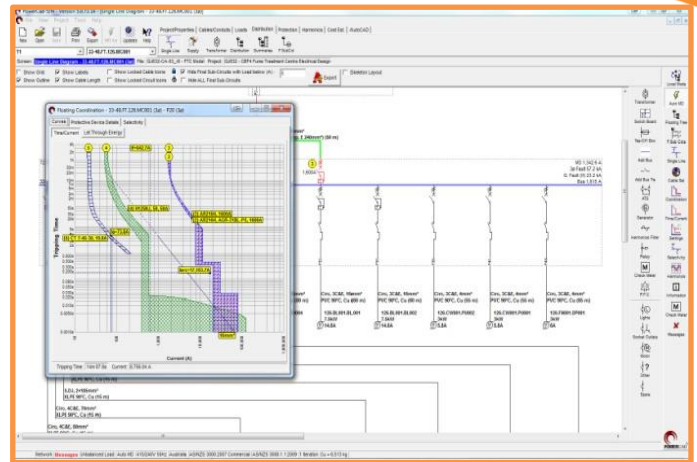
Welcon Technologies has a wide range of experience in the design of electrical power systems for industrial, mining and utility clients.

We aim to produce superior solutions that consistently help you get the job done!

### DESIGN CAPABILITY

Welcon's team of experienced Electrical Engineers can provide engineering design and project management capabilities to suit all of your Plant's requirements, from small modifications and upgrades through to complete electrical systems for new installations:

- Plant Wide Power Distribution
- Transformers and Switchgear
- Switchboards and Distribution Boards
- Motor Control Centres
- Variable Speed Drives and Soft Starters
- Motor Protection and Control
- Industrial Lighting and General Purpose Power
- Earthing Systems
- Lightning Protection



### ENGINEERING SERVICES

With a wide range of Electrical Engineering experience, Welcon Technologies can undertake all aspects of your electrical projects including:

- Project Management
- Feasibility Studies
- Conceptual Designs
- Detailed Design and Drafting
- Design Calculations
- Specifications and Scopes of Work
- Capital Cost Estimates
- Contract Documentation and Management
- Contractor Supervision
- Site Commissioning

### DESIGN DOCUMENTATION

Welcon Technologies can prepare drawings to meet your specific site standards using the latest Computer Aided Design and Drafting systems:

- Single Line Diagrams
- Electrical Schematics
- Termination Diagrams
- Equipment Layouts
- Lighting and Power Layouts
- Block Diagrams
- Cable Schedules

**Contact: Ian Ribbons**

**P** + 61 7 4721 1448

**E** [ian.ribbons@welcon.com.au](mailto:ian.ribbons@welcon.com.au)

**Contact: Brad James**

**P** + 61 7 4976 0600

**E** [brad.james@welcon.com.au](mailto:brad.james@welcon.com.au)