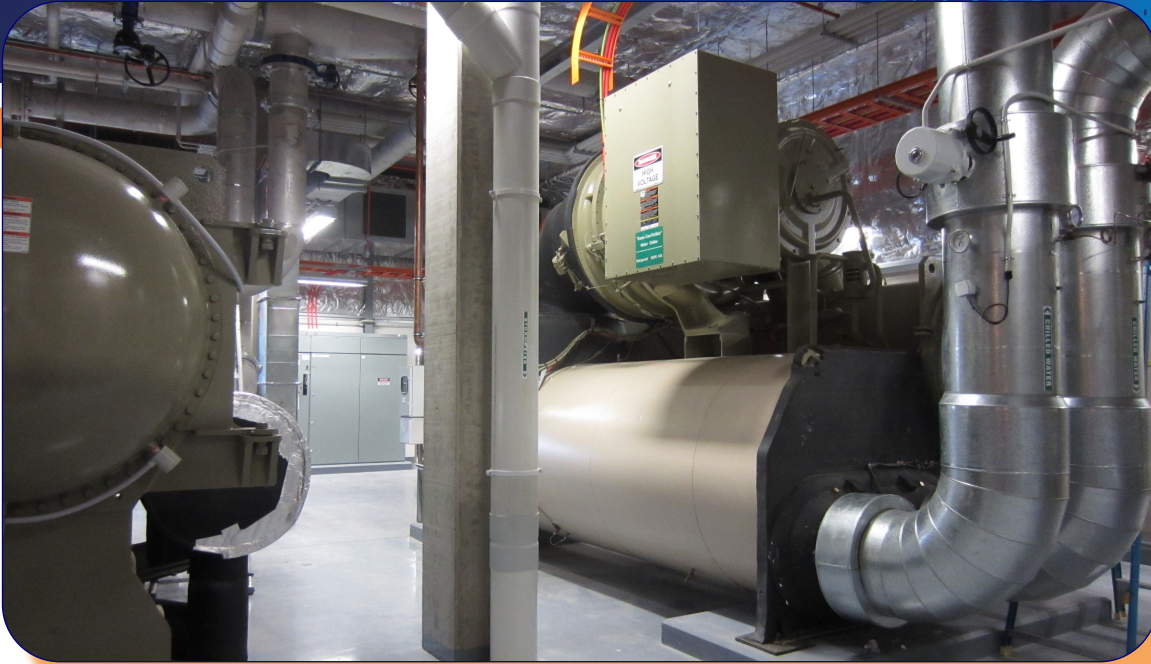


SUCCESS STORIES



Townsville Hospital & Health Services CEF2 Energy Facility Automation

Background:

The Townsville Hospital expansion necessitated the addition of a second Central Energy Facility (CEF2). The new facility contains HV Generation and Chiller units to double the capacity of the existing energy facility.

For the CEF2 expansion, Welcon provided the SCADA control system, selected PLC hardware, programmed the PLC and SCADA software and provided PLC drawings and documentation.

Suppliers were engaged for the supply of components, manufacturing, testing, and delivery to site of the SCADA servers and PLC control panels.

Welcon personnel also completed factory testing and site testing of the CEF2 SCADA system.

Following successful completion of this contract, Welcon has provided ongoing automation and instrumentation engineering services through an Annual Service Agreement for a number of years.

Project Specifics

Client	Townsville Hospital & Health Services
Location	Townsville QLD
Year Completed	2014
Size / Quantities	2x MW Diesel Generators 2 x CitectSCADA Servers 2 x ControlLogix PLCs
Services Provided	<ul style="list-style-type: none">• SCADA Design and Development• PLC Design and Development• Equipment Procurement• Control Panel Manufacture• Factory Testing• Site Commissioning
Delivery Method	Subcontractor for Constructor