

Why work for Welcon Technologies in Gladstone?

Our Business

With its world-class port facilities and excellent existing infrastructure, Gladstone is set to become one of Australia's Renewable Energy Precincts. Alongside these exciting future manufacturing and energy opportunities, are some of Australia's largest industries, each with exciting plans for sustainable production and emission reduction strategies.



From its Gladstone office, Welcon Technologies provides electrical engineering services to many of the existing industries and is perfectly positioned to be a part of the Renewable Energy Precincts and the proposed green Hydrogen and electrolyser plants.

To meet these demands, we are growing our workforce, and have permanent career opportunities for a number of roles in our Gladstone office.

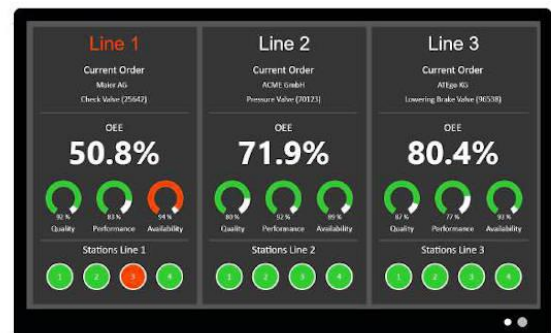
Our forward workload continues to grow, with increasing demand across our existing market sectors, and growing enquiries for our specialist services in the renewable energy space. This includes a combination of greenfield infrastructure projects and industrial plant upgrades.



Our Solutions

We utilise the latest technologies and software to design and deliver customised Electrical Engineering solutions for our clients. These solutions are delivered to:

- Ensure safe and compliant electrical infrastructure
- Increase plant productivity and system reliability
- Reduce operating costs and energy consumption
- Provide long-term benefits to the environment and the community



By working closely with our clients, our engineers take pride in being able to understand the client's objectives and priorities, then delivering safe, well-engineered solutions to meet their needs.

The Roles



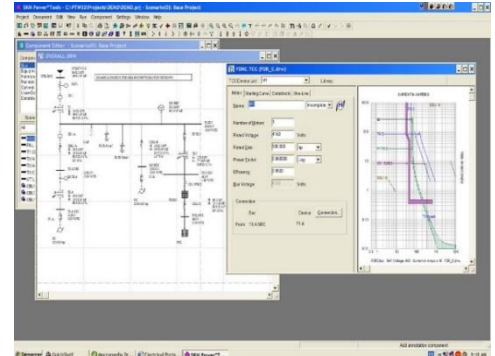
Our engineers are passionate about ensuring that our clients' electrical systems meet these objectives. But it's not just about sitting behind a computer – these roles mean getting out on site, meeting with clients, collecting data, getting hands-on with equipment, testing and commissioning.

Company Culture

Our culture provides an environment where knowledge is shared, innovation is encouraged, and employees are excited by the challenges of working across a number of industries. Our reputation for quality is the result of talented specialists working with proven systems and an ethos of continuous improvement.

By joining Welcon, you will:

- Work within small teams, under experienced mentors, in a wide variety of industries.
- Expand your skills with your discipline.
- Utilise modern software tools to design and analyse electrical systems.
- Take responsibility for your work and meeting budgets and schedules.
- Be challenged but recognised for your innovation and capabilities.



Applicants

To be successful the prospective applicants will have:

- A Degree qualification in Electrical Engineering.
- Relevant design / analysis experience.
- Excellent language and communications skills, especially written.
- Strong interpersonal skills with a focus on building relationships with clients.
- Good knowledge of Australian Standards applicable to electrical engineering.
- A strong desire to learn and take responsibility for your career.

Benefits

Welcon employees enjoy a flexible work environment, with highly valued Work Life Balance, including a 9-day Fortnight.

Living in Gladstone you will enjoy a modern regional city lifestyle with all modern amenities and recreational facilities. Close to the Great Barrier Reef with coral islands and whale watching only a short drive away, Gladstone provides a safe, relaxed and active environment for young families to grow, with no big city traffic hassles.

